



Established in the year 2005, We Prem Flow Environment & Technologies is one of the known organizations enormously indulged in manufacturing and trading an extensive series of Commercial RO System, Domestic Water Purifiers, Effluent Treatment Plant, RO Pumps, Sewage Treatment Plants, Water Softeners etc. We are also providing services of RO Repairing Services and RO AMC Services. Our offered products are made using the top quality raw material, sourced from trustworthy retailers of market. Our presented products are broadly employed in the market for their easy to use, water resistance, sturdy design, and longer working life. Besides, in order to supply the performance tested products, these products are checked on varied industry parameters using the advanced testing tools. Moreover, to develop these products as per industry norms, we have established an advanced development unit that is settled with advanced machines and tools. Moreover, we provide these products in diverse specifications that meet on patrons demand.

## Why You Should Choose Us ?

Prem Flow Environment & Technologies is a Delhi, India based firm, involved in providing an extensive range of products. We hold a status in the market by following honest deal in all our commercial actions. We are also known in the market for on-time delivery. Our entity also accepts numerous payment methods to our customers such as DD, online transfer, and cash. Our client can easily buy these products from us at nominal prices.

- »» Finest quality products
- »» Large distributive network
- »» Timely delivery
- »» Convenient payment modes
- »» Cost-effective price
- »» Skilled team

# OUR SERVICES



**Wall Mounted RO Water Purifier**



**Domestic Water Purifier**



**Kent Water Purifiers**



**Commercial RO System**



**Commercial Reverse Osmosis System**



**Effluent Treatment Plant**



**RO System Repairing Service**



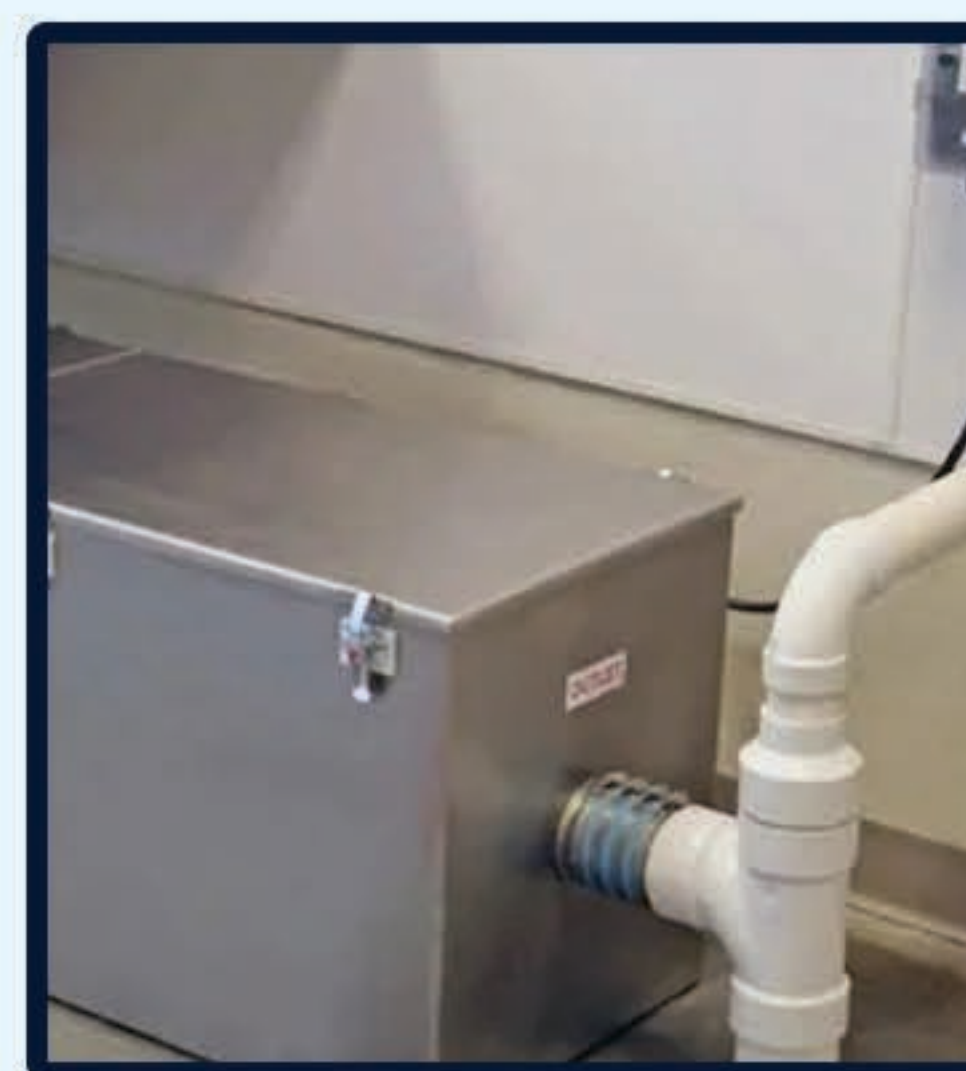
**RO AMC Service**



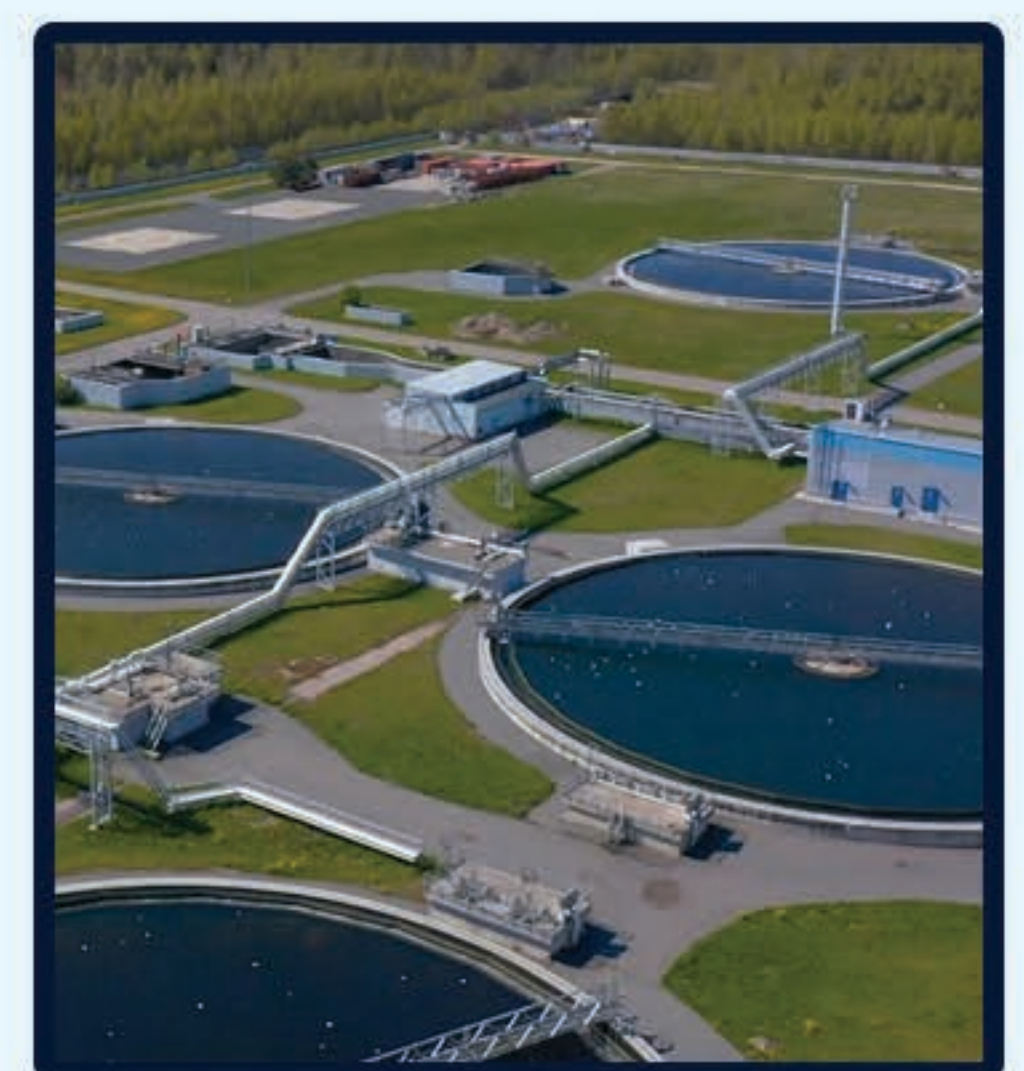
**Water Softeners**



**Chimney**



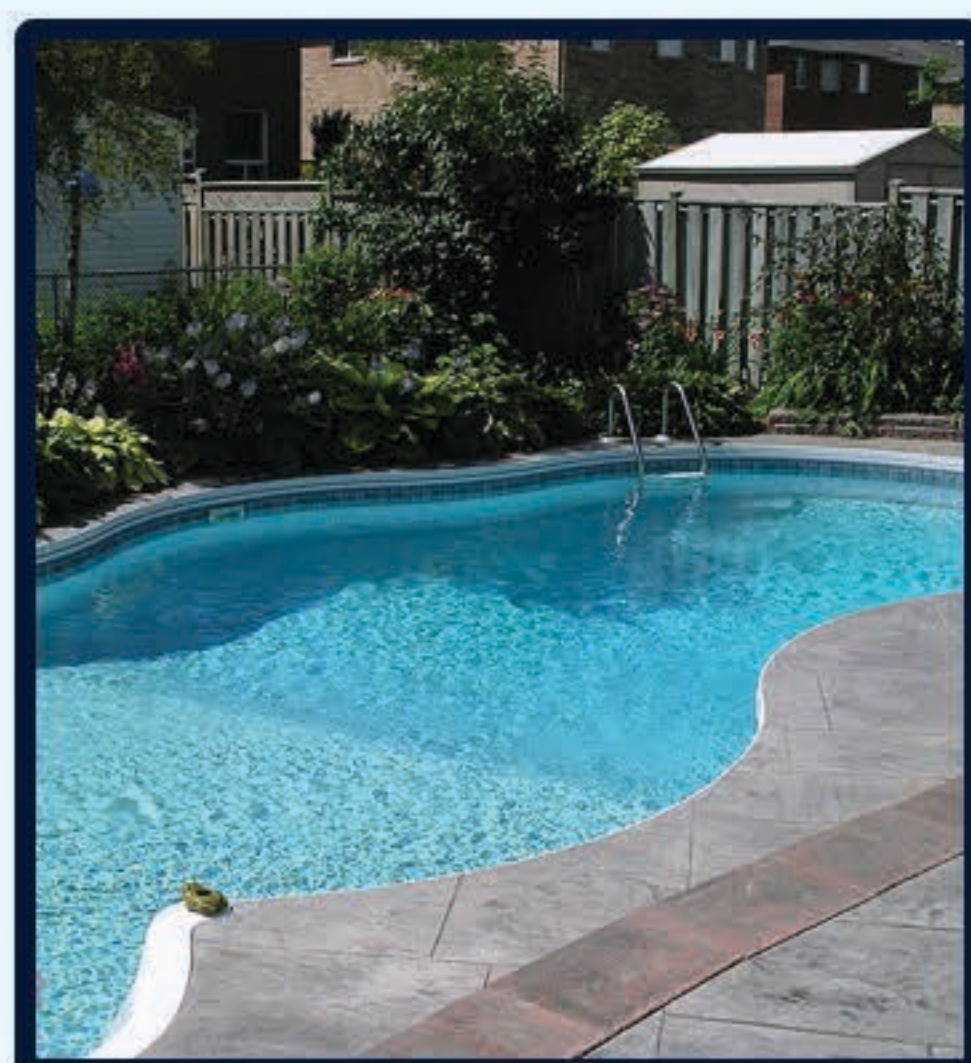
**Oil and Grease Trap**



**Sewage Treatment Plants**



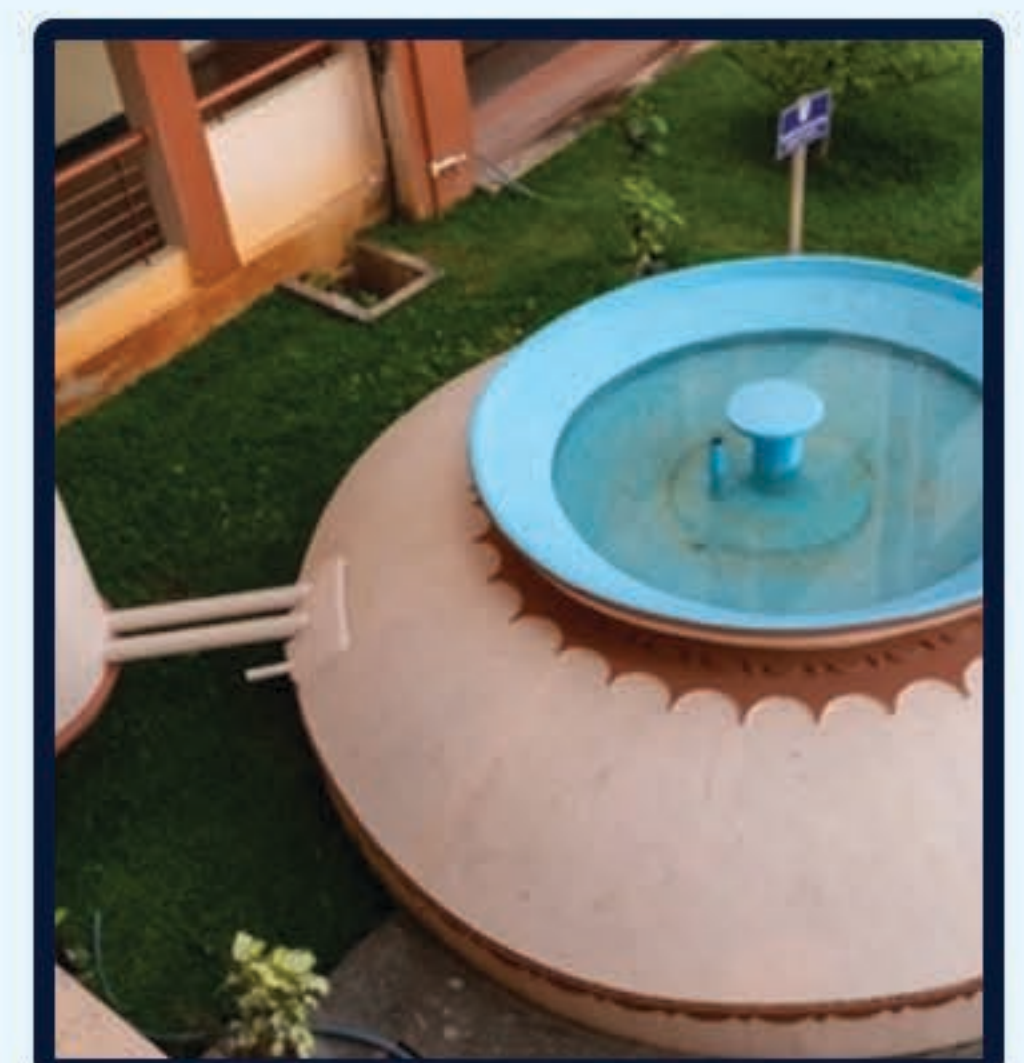
**Pressure Pumps**



**Swimming Pool**



**Steam Boiler**



**Rain Water Harvesting**